



94HO0931 ESKDALE RONALD  
**MCD**-P-RED-ET

*McDonald-P-Red* x *Ronald\*RC* x *Undenied* x *MONTEREY*

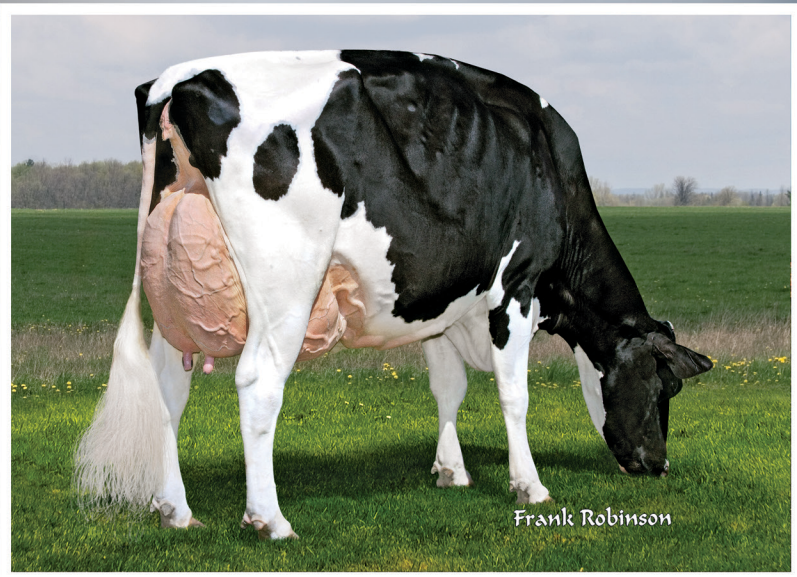
HO 840 3250271728 99% DOB: 8/9/2022 DMS: 246,126 aAa: 2 4 6 3

Bred by & Acquired from Eskdale Dairy, Garrison, UT



Frank Robinson

4TH DAM – DINOMI DRMAN RYLEY-ET EX-90



Frank Robinson

6TH DAM – DINOMI OFFROAD RYLEY-ET EX-94

*sire*

**APRILDAY MCDONALD-P-RED-ET**

*dam*

**DINOMI RONALD KATAV-ET VG-85**

*sired by Trent-Way-Js Ronald-ET VG-85*

2-01 2x 365d 16,930 M 4.4% 752 Fat 3.6% 610 Prot

*2nd dam*

**DINOMI UNDENIED KAY 11942 VG-87-2Y**

2-01 2x 365d 26,750M 4.7% 1250 Fat 3.5% 927 Pro

*3rd dam*

**DINOMI MENTRY KAHLI 10981 VG-86-2Y**

2-00 2x 232d 19,120M 4.0% 771 Fat 3.2% 607 Prot

*4th dam*

**DINOMI DRMAN RYLEY-ET EX-90**

1-11 2x 365d 33,680M 4.4% 1,497 Fat 3.3% 1,128 Prot

*5th to 12th dams*

**DINOMI ATWOOD RYLEY 9312-ET EX-90**

3-01 2x 365d 41,070M 4.1% 1,674 Fat 3.3% 1,364 Prot

**DINOMI OFFROAD RYLEY-ET EX-94 2E GMD**

6-08 2x 365d 47,340M 3.5% 1,671 Fat 3.0% 1,432 Prot

Lifetime: 1,833d 190,350M 3.5% 6,656 Fat 3.1% 5,978 Prot

Senior & Grand Champion CA State Show 2010

**CRANEHILL TITANIC RENNI-ET VG-89 GMD**

2-03 2x 365d 39,230M 3.8% 1,495 Fat 3.1% 1,229 Prot

**MARKWELL DURHAM FANCY-ET EX-90 DOM**

**MARKWELL MERRILL RIVIERA-ET EX-90**

**MARKWELL BSTAR E RAVEN-ET EX-95 3E GMD DOM**

Queen of the Breed Finalist

**MARKWELL MARK ELITE EX-92 4E GMD DOM**

**ROCKALLI MARS EMILY EX-94 4E GMD DOM**

*Type without compromise!*



www.stjacobsabc.com

DELIVERED BY ABS GLOBAL INC.

