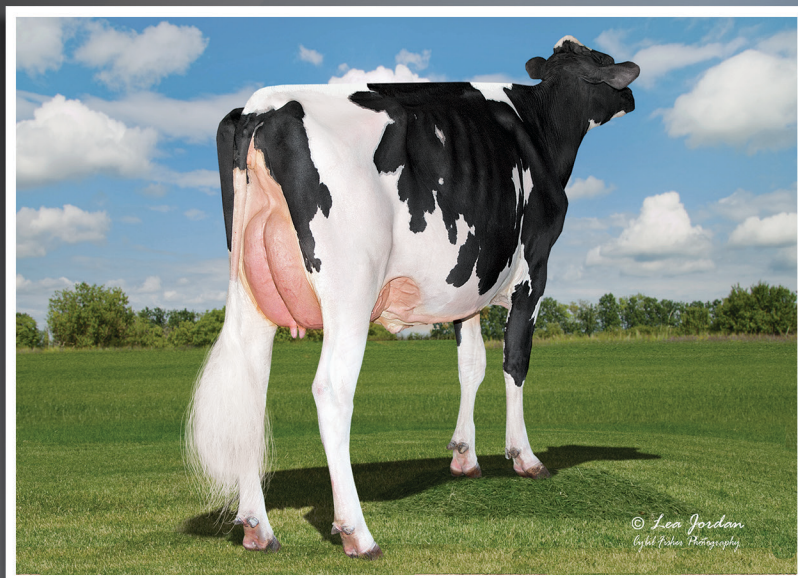


94HO21181 Townlineacre Jag
LAMBEAU^{-ET}

Jagger x Doc x Doorman x Goldwyn

HO 840 3245704314 99% DOB: 10/26/2021 aAa 2 3 4 HH1

Bred by & Acquired from Townline Acres, Birnamwood, WI



DAM – TOWNLINEACRE KING DOC LENA EX-92



3RD DAM – GLORYLAND-I GOLDWYN LOCKET-ET EX-94

sire

PEAK JAGGER-ET

dam

TOWNLINEACRE KING DOC LENA EX-92

sired by Woodcrest King Doc EX-90

1-10 3x 308d 22,793M 3.7% 833 Fat 2.9% 659 Prot

2nd dam

GOLDEN-OAKS LOCKN LOAD-ET VG-85

2-10 3x 273d 20,410M 4.0% 820 Fat 2.9% 593 Prot

3rd dam

GLORYLAND-I GOLDWYN LOCKET-ET EX-94 2E 12*

4-11 3x 365d 37,310M 5.0% 1,855 Fat 3.4% 1,264 Prot

Lifetime: 1,584d 142,293M 4.6% 6,614 Fat 3.4% 4,901 Prot

Nominated All-Canadian Milking Yearling 2011

4th dam

GLORYLAND LAKOTA RAE-ET VG-88 DOM 2*

2-03 2x 365d 22,850M 3.8% 857 Fat 3.3% 751 Prot

5th dam

GLORYLAND LANA RAE EX-94 2E DOM 1*

Lifetime: 2,113d 129,620M 3.7% 4,768 Fat 3.4% 4,343 Prot

6th to 11th dams

SCIENTIFIC LIZA RAE-ET EX-90

C HANOVERHILL TONY RAE EX-96 3E GMD DOM 5*

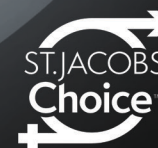
C HANOVERHILL TT ROXETTE-ET EX-94 2E GMD DOM

MIL-R-MOR ROXETTE EX-CAN GMD DOM 30*

C GLENRIDGE CITATION ROXY EX-97 4E GMD 6*

C NORTON COURT MODEL VEE EX-90 6*

Type without compromise!



www.stjacobsabc.com

DELIVERED BY ABS GLOBAL INC.